

PURLINE Bioboden | wineo 1500 acoustic roll for gluing

wineo
THAT'S FLOORING

PURLINE organic flooring wineo 1500 acoustic roll for gluing is a high-quality polyurethane flooring. It is based on ecuran, a high-performance composite material made predominantly from vegetable oils such as rapeseed or castor oil and naturally occurring mineral components.

Below we would like to inform you about the special requirements for a successful installation of **PURLINE organic flooring wineo 1500 acoustic roll for gluing**. Please note that polyurethane flooring is a separate product category and follow the installation instructions. For more information, please refer to the technical specifications in our product collections.

Important general information:

Before processing, make sure that the delivered goods are in perfect condition. The rolls must be stored upright. Cut or misplaced goods are excluded from complaints. Prior to installation, the goods must be checked for colour and batch uniformity. Only lay rolls of the same batch in the same room.



The relevant national standards, guidelines and regulations as well as the technical references and recognised rules of the trade apply to the installation of **wineo 1500 acoustic roll for gluing**. In particular, observe the following guidelines

Notice:

The floor layer must check the readiness of the subfloor for installation before laying the floor covering and raise any concerns. Especially in case of:

- major unevenness
- insufficiently dry subfloor.
- insufficiently firm, too porous and too rough surface of the subfloor,
- contaminated surface of the substrate, e.g. by oil, wax, varnish, paint residues,
- incorrect height of the surface of the substrate in relation to the height of adjoining components,
- unsuitable temperature of the substrate,
- unsuitable room climate,
- missing heating protocol for heated floor constructions,
- missing protrusion of the edge insulation strip,
- missing marking of measuring points for heated floor constructions,
- missing joint plan.

PURLINE Bioboden | wineo 1500 acoustic roll for gluing

wineo
THAT'S FLOORING

In order to level out unevenness and to obtain an evenly absorbent substrate, it is recommended to apply a suitable levelling compound in sufficient layer thickness using the squeegee technique. Non-absorbent substrates or substrates that are blocked against rising damp must be levelled with a layer thickness of at least 3mm. Please observe the instructions of the building material suppliers. When bonding **wineo 1500 acoustic roll for gluing** to underfloor heating systems, EN 1264-2 (Room Surface Integrated Heating and Cooling Systems with Water Flow Part 2) must be taken into account in addition to national requirements. The surface temperature should not exceed 27°C permanently.



You will need the following tools for the installation:

1. hygro-thermometer
2. pencil
3. scale
4. dolphin knife with hook and trapezoid blade
5. chalk line
6. edge cutter
7. adhesive spatula with B1 teeth adhesive
8. linocut
9. hand pressure roller
10. pressure board
11. sectional roller min. 50kg (110lbs)



Acclimatisation:

wineo 1500 acoustic roll for gluing must be acclimatized upright (3) in the rooms to be installed or adjacent rooms for at least 48 hours before installation with constant parameters under the following conditions! All installation aids must also be acclimatized accordingly. It is not recommended to lay out the covering before gluing. The covering should be glued directly after rough cutting.

Room climatic requirements:

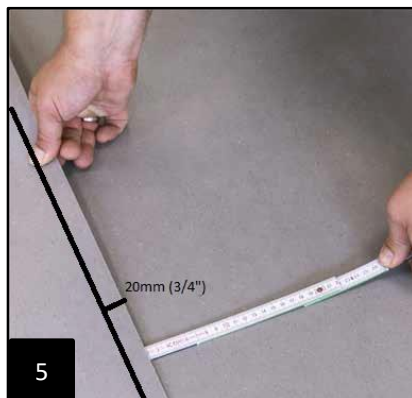
- Air temperature in the room > 18°C (but not more than 26°C).
- Floor temperature > 15°C (but not more than 25°C)
- Relative humidity < 65%

PURLINE Bioboden | wineo 1500 acoustic roll for gluing

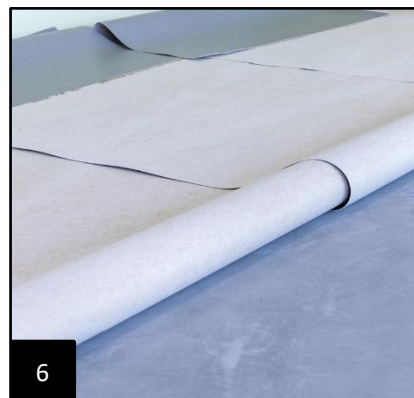
wineo
THAT'S FLOORING

It must be ensured that constant room climatic conditions exist during the acclimatisation as well as the setting phase of the adhesive. The above-mentioned room climate must be maintained for at least 72 hours before, during and after bonding the covering. The underfloor heating must be kept at a constant 18-22°C during this time.

Installation:



wineo 1500 acoustic roll for gluing must be installed in the same direction. The factory edges must always be trimmed before installation (4). Lay out the floor covering lengthwise with an overlap of approx. 2.0cm (3/4") per strip for the subsequent seam cut (5). In the case of wood decors, it is not mandatory to pay attention to the repeat, but a length allowance of at least 10cm per strip should be made so that an offset of the wood joints on the front side can be ensured. When cutting the seam, make sure that the cut runs directly next to the wood joint and that the wood joint remains on the other side.



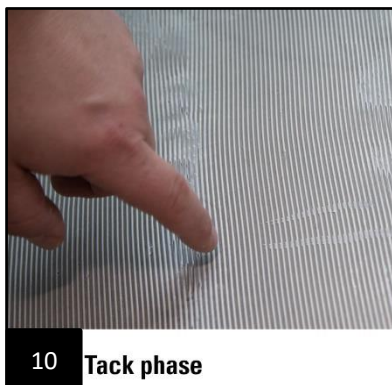
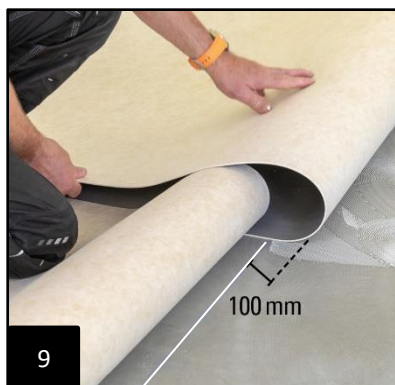
Now beat or roll the sheets back to the centre of the room (6). In order to achieve a straight adhesive approach, a beating cord should be used (7).

Now apply the adhesive approved by Windmüller GmbH evenly and lane by lane according to the adhesive manufacturer's instructions using the TKB toothed strip (usually **TKB B1** toothing) recommended for this purpose (8).



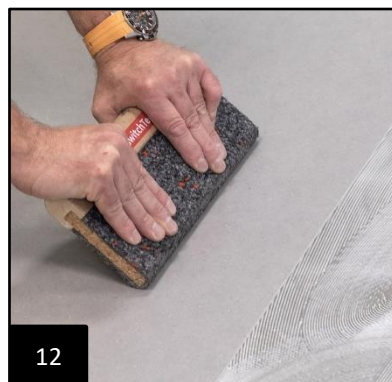
PURLINE Bioboden | wineo 1500 acoustic roll for gluing

wineo
THAT'S FLOORING



Now push the sheets approx. 10cm into the fresh adhesive to avoid visible glue marks later (9). Proceed in the same way on the opposite side.

Allow the adhesive to flash off according to the manufacturer's instructions, taking into account the room climate conditions. Now place the covering in the adhesive bed in the "tack phase" (10). (Attention: **no** adhesive bed bonding).



In order to achieve an optimum installation result, the covering must be carefully rubbed from the centre to the sides immediately after it has been placed (11) in the adhesive bed. (e.g. cork or surface scraper) from the centre to the sides (12).

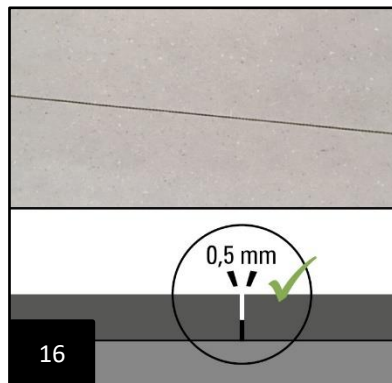
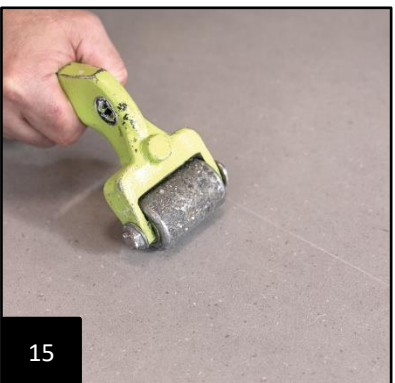


Seam cut:

Immediately after inserting and rubbing down the lining, cut the seam with a suitable seam cutter (e.g. "Linocut" or seam ripper) (13) to a distance of approx. 0.5mm (16) between the covering edges (14) and press the seam again with a seam roller (15).

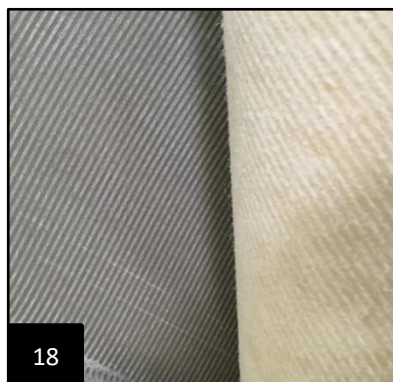
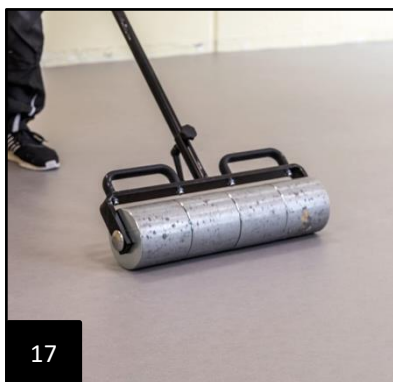
Due to different climatic conditions at the construction sites, as well as the associated reaction times of the adhesives used, a larger seam spacing may be necessary. **Caution: The wineo 1500 acoustic roll for gluing must not be cut tight!**

If necessary, a test bonding should be carried out.



PURLINE Bioboden | wineo 1500 acoustic roll for gluing

wineo
THAT'S FLOORING



Afterwards, but not later than 30 minutes after manual rubbing, the covering is evenly and slowly rolled (17) using an articulated roller (weight min. 50 kg / 110lbs). Check that the covering is sufficiently wetted (18) with adhesive.



Now cut the covering all around (19) so that the edge joints remain open to avoid sound bridges and compression on walls and door frames. After the partial surface has been laid and all seams have been cut, carefully roll the surface and all edge areas once again (20). Now knock back the flooring from the opposite side as well. Avoid adhesive transfer at the cover edge of the covering. After the appropriate flash-off time, push the covering into the adhesive bed, strip by strip, and carefully rub and roll the covering as described above.

Thermal sealing of the seam edges in hygienic and damp areas is generally recommended; this must be carried out no earlier than 24 hours after installation or after the adhesive has set (follow manufacturer's instructions).

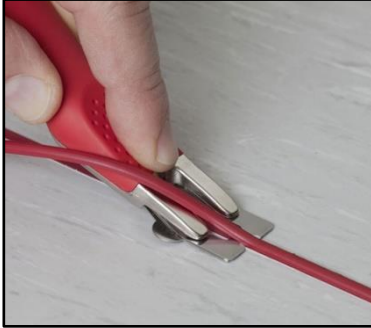
Thermal welding :



Mill the flooring seams to a minimum depth of 2.0 mm and a maximum width of 3.5 mm. Seams in edge areas must be gouged to the appropriate width and depth using a suitable joint extractor.



Set the welding machine to approx. 450°C. Use a 5.0mm speed welding nozzle to insert the fusion wire.



While still warm, push off half of the fusible link with the "Mozart" push-off knife with spacer plate (0.7mm). Allow the remaining, excess fusible link to cool completely and then push it off flush with the surface of the floor covering using the "Mozart" push-off knife without spacer plate

2-K joint material:

Sealing the covering joints with 2-component joint sealants is possible, if required, after prior consultation with the Windmüller GmbH application technology department.

The installed surface should only be put into operation/loaded after the adhesive has completely set (follow the adhesive manufacturer's instructions). Please note that the contractor has a maintenance obligation (protection of the floor covering from damage by subsequent trades) for a completed but not yet accepted trade. Please use only vapour-open covering material. Through partial acceptance, the maintenance obligation for the accepted areas is transferred to the client.

Cleaning and maintenance:

Please refer to our detailed cleaning and cleaning agent recommendations at www.wineo.de!

With the publication of these installation instructions (as of 03/2021), all previous versions lose their validity.